



Innovation that excites

2017 FRONTIER®

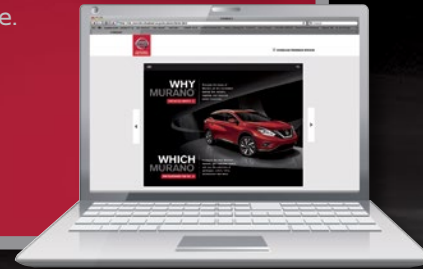
SWIPE FOR MORE INFO

Download the Interactive Brochure Hub app on your tablet and you'll have Frontier® and the whole Nissan lineup at your fingertips. Get the full product story enhanced with interactive demos and videos, plus complete info on trim levels, colors, accessories, and more.



Nissan Interactive Brochure Hub available free on the App Store® and Google Play.®

Or go to NissanUSA.com to view on your desktop.



NISSAN ROADSIDE ASSISTANCE

Your peace of mind is on us. For 36 months or 36,000 miles, whichever comes first, your new Nissan is covered for the following:¹

- Flat-tire changes
- Jump starts
- Trip Interruption benefits
- Vehicle lockouts
- Emergency fuel delivery



Innovation that excites

Follow Nissan on:



visit NissanUSA.com/frontier

¹Roadside Assistance and Trip Interruption available during the first 36 months or 36,000 miles (whichever occurs first) after initial new vehicle delivery. Restrictions apply. See Owner's Manual for details. The App Store® is a registered trademark of Apple, Inc. All rights reserved. Facebook® is a registered trademark of Facebook, Inc. Google Play® is a registered trademark of Google, Inc. Twitter® is a registered trademark of Twitter, Inc. YouTube® is a registered trademark of Google Inc.

PRINTED IN USA

TAKE ON the path less traveled, on-road or off. Power through most every job, big or small. Open up to more possibilities and more crew. Stop. Back it up. Take a look at what's directly behind you, hitch up your weekend toys, and go.¹ The 2017 Nissan Frontier.[®] Toughness for the work site, rugged capability for **UNMAPPED TERRITORY.**



Nissan Frontier[®] PRO-4X[®] King Cab[®] shown in Lava Red with accessory Body Side Moldings.

¹Towing capability varies by configuration. See Nissan Towing Guide and Owner's Manual for additional information.



SURROUND YOURSELF WITH THE BEST

Whether you're on the job or on the go, Frontier® offers everything you need to make the space yours. Embrace a great-looking interior plus an available sporty, leather-wrapped steering wheel with cruise control and audio adjustments. Crank up the available Rockford Fosgate®-powered audio system, which features ten speakers, including subwoofers.¹ Make and take calls with your hands on the wheel using the available Bluetooth® Hands-free Phone System.^{2,3} And get things the way you like it with available Dual Zone Automatic Temperature Control (ATC).

¹Crew Cab only. ²Standard on all models except Frontier S King Cab® with manual transmission. ³Availability of specific features is dependent upon the phone's Bluetooth® support. Please refer to your phone Owner's Manual for details. Bluetooth® word mark and logos are owned by Bluetooth SIG, Inc., and any use of such marks by Nissan is under license. See NissanUSA.com/bluetooth for details. Rockford Fosgate® is a registered trademark of Rockford Corporation. The Sirius®, XM®, and SiriusXM® names and all related marks and logos are trademarks of Sirius XM Radio Inc.

Nissan Frontier® PRO-4X® Crew Cab shown in Graphite Leather with optional equipment.



UP TO
6,710
LBS. MAX TOWING¹

BRING THE BIG TOYS

Power – either you’ve got it, or you don’t. And with Frontier,[®] you’ve got it in a big way. With an available 4.0-liter V6 engine packing 261 horsepower, your V6 is chomping at the bit. And with a massive 281 lb-ft of torque, you can tow or haul just about anything you need to bring along.¹ There’s even an available Flexible Fuel Vehicle (FFV) feature that allows you to choose ethanol E85, standard gasoline or any mixture of the two fuels.

¹Frontier SV V6 King Cab[®] 4x2 shown. Towing capability varies by configuration. See Nissan Towing Guide and Owner’s Manual for additional information.

261 HORSEPOWER **281** LB-FT OF TORQUE

SHAKE UP SOME SAND

The Desert Runner[®] serves up major attitude with 16" 6-spoke aluminum-alloy wheels, a satin chrome grille, and details like fog lights and a body-color rear bumper. Bilstein[®] off-road performance shocks and 265/75R16 mud- and snow-rated all-terrain tires help maximize your potential. And a unique bedside decal tops it off – just before you leave them in the dust.

Bilstein [®] shocks	All-terrain tires	Body-color rear bumper and satin chrome grille	16" 6-spoke aluminum-alloy wheels
------------------------------	-------------------	--	-----------------------------------

Bilstein[®] is a registered trademark of ThyssenKrupp Bilstein GmbH.



PUT YOUR CARGO ON LOCKDOWN

The available Utili-track[®] Channel System on Frontier[®] gives you choices few other trucks can match. Just about any type of cargo you can think of, this system is fully equipped to help keep it secured tightly. Five channels, four cleats, and a lot of thought about how people really use their trucks have created a system that’s simple, rugged, and offers near-infinite possibilities.²

²Cargo shown for display purposes only. Cargo and load capacity limited by weight and distribution. Always secure all cargo. Heavy loading of the vehicle with cargo, especially on the roof, will affect the handling and stability of the vehicle.



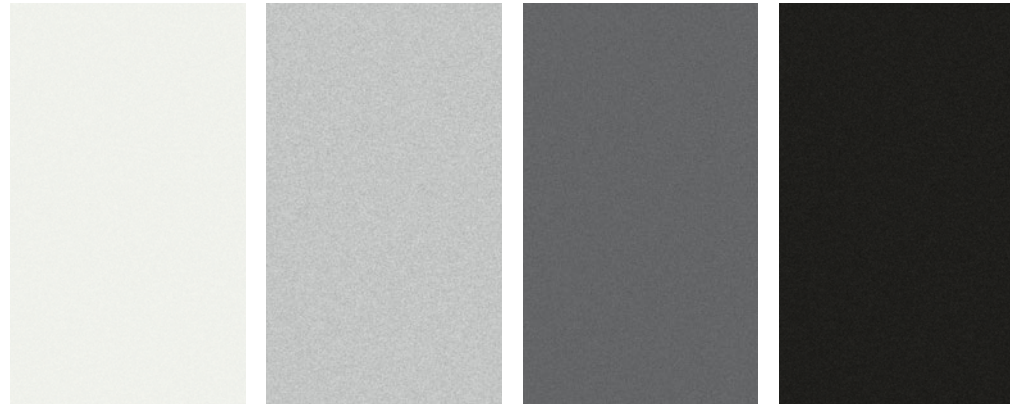
TAKE ON THE TOUGH JOBS



4X4 CAPABILITY

With the available 4x4 system, you can choose between 2WD, 4H, and 4LO, to help maximize fuel efficiency on the highway and get serious off-road capability on command. Four-wheel Active Brake Limited Slip (ABLS), and available hill start assist and hill descent control help you conquer even the roughest terrain.

CHOOSE YOUR COLOR



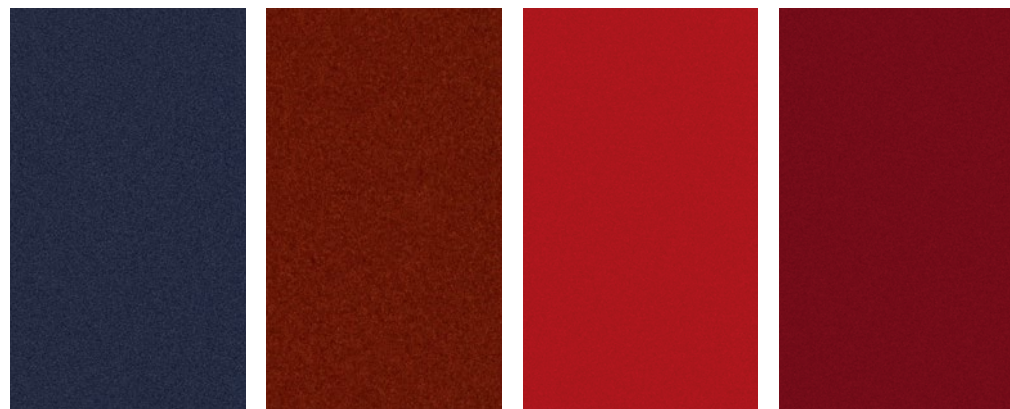
Glacier White QAK

Brilliant Silver K23

Gun Metallic KAD

Magnetic Black G41

	S	SV	DR	PRO	SL
STEEL CLOTH	■	■ ¹	■ ¹		
STEEL LEATHER					■
BEIGE CLOTH		■			
BEIGE LEATHER					■
GRAPHITE CLOTH		■ ²	■ ²		
GRAPHITE STEEL CLOTH			■ ²	■	
GRAPHITE LEATHER				L ¹	



Arctic Blue Metallic RBG

Forged Copper CAU

Lava Red EAF

Cayenne Red NAH

	S	SV	DR	PRO	SL
STEEL CLOTH		■ ¹	■ ¹		
STEEL LEATHER					■
BEIGE CLOTH					
BEIGE LEATHER					■
GRAPHITE CLOTH		■ ²			
GRAPHITE STEEL CLOTH			■ ²	■	
GRAPHITE LEATHER				L ¹	

■ Standard

L Part of PRO-4X[®] Luxury Package

¹Crew Cab only.

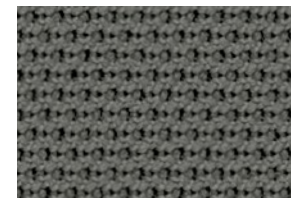
²King Cab only.

Nissan has taken care to ensure that the color swatches presented here are the closest possible representations of actual vehicle colors. Swatches may vary slightly due to the printing process and whether viewed in daylight, fluorescent or incandescent light. Please see the actual colors at your local Nissan dealer.

CHOOSE YOUR INTERIOR



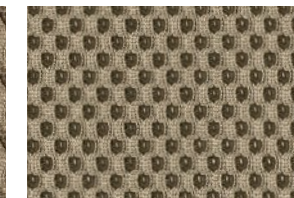
Nissan Frontier[®] SL Crew Cab shown in Steel Leather.



Steel Cloth
S King Cab[®]



Beige Cloth
SV King Cab



Beige Cloth
SV Crew Cab



Graphite Steel Cloth
Desert Runner[®] | PRO-4X King Cab
PRO-4X Crew Cab



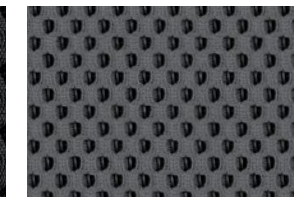
Beige Leather
SL Crew Cab



Graphite Cloth
S King Cab



Graphite Cloth
SV King Cab



Steel Cloth
S | SV | Desert Runner Crew Cab





Graphite Leather
PRO-4X Crew Cab





Steel Leather
SL Crew Cab



CHOOSE YOUR TRIM LEVEL


S	KING CAB®	CREW CAB
<p>2.5-liter 4-cylinder engine, 5-speed manual transmission, 15" 6-spoke steel wheels, Active Brake Limited Slip (ABLS), full-length and fully boxed ladder frame, 5.0" color display,¹ AM/FM/CD audio system with four speakers,¹ USB connection port for iPod® interface and other compatible devices,^{1,2} Bluetooth® Hands-free Phone System,^{1,3} hands-free text messaging assistant,^{1,4} streaming audio via Bluetooth® wireless technology,^{1,3} Siri® Eyes Free,^{1,5} rear access doors, second-row under-seat storage, Vehicle Dynamic Control (VDC),⁶ Tire Pressure Monitoring System (TPMS)⁷</p>		
<p>Crew Cab adds: 4.0-liter V6 engine, 6-speed manual transmission,⁸ available 5-speed automatic transmission, four full-size doors with seating for five, 16" 6-spoke steel wheels, AM/FM/CD audio system with six speakers</p>		
<p>KEY AVAILABLE PACKAGES: S Work Truck Package,⁹ S Preferred Package (King Cab with manual transmission only)</p>		






SV 4-CYL. / V6	KING CAB	CREW CAB	CREW CAB LONG BED
<p>SV 4-cylinder includes S equipment plus: 16" 6-split spoke aluminum-alloy wheels, body-color front bumper, chrome rear bumper, SiriusXM® Satellite Radio,¹⁰ remote keyless entry, tilt steering column, power door locks and windows, sliding rear window, sun visors with vanity mirrors and extension</p>			
<p>SV V6 includes SV 4-cyl. equipment plus: 4.0-liter V6 engine, 5-speed automatic transmission, bed rail caps</p>			
<p>Crew Cab adds: 4.0-liter V6 engine, 6-speed manual transmission,¹¹ available 5-speed automatic transmission,¹² four full-size doors with seating for five, AM/FM/CD audio system with six speakers</p>			
<p>KEY AVAILABLE PACKAGES: SV Value Truck Package (V6 with automatic transmission only),¹³ Moonroof Package (Crew Cab only)</p>			







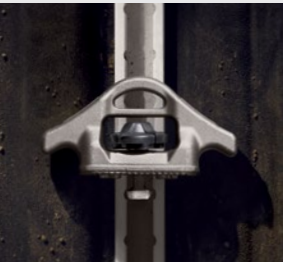


DESERT RUNNER®	KING CAB	CREW CAB
<p>Includes SV V6 equipment plus: 16" 6-spoke aluminum-alloy wheels with all-terrain tires, Bilstein® off-road performance shocks, fog lights, satin chrome grille, body-color rear bumper, 8-way manual driver's seat, white-faced gauges, Frontier® embroidered cloth seat trim</p>		
<p>Crew Cab adds: Four full-size doors with seating for five, AM/FM/CD audio system with six speakers</p>		








PRO-4X®	KING CAB	CREW CAB
<p>Includes SV V6 equipment plus: Bilstein® off-road performance shocks, electronic locking rear differential, clutch start/cancel (manual transmission only), skid plates, 16" 6-spoke aluminum-alloy wheels with all-terrain tires, automatic on/off headlights and fog lights, Utili-track® Channel System, factory-applied spray-on bedliner, satin chrome grille, body-color rear bumper and outside mirrors, PRO-4X bedside decal, NissanConnect™ with Navigation and Mobile Apps,¹⁴ 5.8" color touch-screen display, Nissan Voice Recognition for navigation and audio,¹⁵ SiriusXM® Traffic and Travel Link,¹⁰ RearView Monitor,¹⁶ Rear Sonar System,¹⁷ Dual Zone Automatic Temperature Control (ATC), PRO-4X embroidered cloth seat trim, 8-way manual driver's seat, heated front seats, white-faced gauges, leather-wrapped steering wheel</p>		
<p>Crew Cab adds: 6-speed manual transmission, available 5-speed automatic transmission, four full-size doors with seating for five, Rockford Fosgate®-powered audio system with ten speakers</p>		
<p>KEY AVAILABLE PACKAGE: PRO-4X Luxury Package (Crew Cab with automatic transmission only)</p>		

SL	CREW CAB	CREW CAB LONG BED
<p>Includes SV V6 equipment plus: 18" 6-split spoke aluminum-alloy wheels, automatic on/off headlights and fog lights, Utili-track® Channel System, factory-applied spray-on bedliner, chrome front bumper, outside mirrors and door handles, heated outside mirrors, body-color side moldings, step rails, NissanConnect™ with Navigation and Mobile Apps,¹⁴ 5.8" color touch-screen display, Nissan Voice Recognition for navigation and audio,¹⁵ SiriusXM® Traffic and Travel Link,¹⁰ Rockford Fosgate®-powered audio system with ten speakers, RearView Monitor,¹⁶ Rear Sonar System,¹⁷ Dual Zone Automatic Temperature Control (ATC), HomeLink® Universal Transceiver, leather-appointed seats, 8-way power adjustable driver's seat, 4-way power adjustable front-passenger's seat, heated front seats, leather-wrapped steering wheel and shift knob</p>		
<p>KEY AVAILABLE PACKAGE: Moonroof Package</p>		

¹Standard on Frontier® S King Cab® with automatic transmission and Frontier® S Crew Cab models only. Available for Frontier® S King Cab® with manual transmission in the S Preferred Package. ²Driving is serious business and requires your full attention. If you have to use the connected device while driving, exercise extreme caution at all times so full attention may be given to vehicle operation. iPod® is a registered trademark of Apple, Inc. All rights reserved. iPod® or other external device not included. ³Availability of specific features is dependent upon the phone's Bluetooth® support. Please refer to your phone Owner's Manual for details. Bluetooth® word mark and logos are owned by Bluetooth SIG, Inc., and any use of such marks by Nissan is under license. See NissanUSA.com/bluetooth for details. ⁴Use the text messaging feature after stopping your vehicle in a safe location. If you have to use the feature while driving, exercise extreme caution at all times so full attention may be given to vehicle operation. Compatible smartphone required. Text rates and/or data usage may apply. ⁵Driving is serious business and requires your full attention. Only use feature when safe to do so. Compatible smartphone required. Availability of specific feature is dependent upon the phone's Bluetooth® support. Please refer to your phone Owner's Manual for details. Bluetooth® word mark and logos are owned by Bluetooth SIG, Inc. and any use of such marks by Nissan is under license. See NissanUSA.com/bluetooth for details. Text rates and/or data usage may apply. Certain services, including Siri®, are provided by independent companies not within Nissan's control. Should service provider terminate/restrict service, service may be suspended or terminated without notice or liability to Nissan and/or its agents. Nissan not responsible for any equipment replacement or upgrades, or associated costs, that may be required for continued operation due to service changes. Siri® Eyes Free is a registered trademark of Apple, Inc. ⁶VDC, which should remain on when driving except when freeing the vehicle from mud or snow, cannot prevent accidents due to abrupt steering, carelessness, or dangerous driving techniques. ⁷TPMS is not a substitute for regular tire pressure checks. ⁸4x2 only. ⁹Late availability. ¹⁰Required monthly subscriptions sold separately for each available SiriusXM feature after trial period, and are continuous until you call SiriusXM to cancel. Installation costs, one-time activation fee, other fees and taxes will apply. Each SiriusXM feature availability is dependent upon vehicle model, trim level, packaging, and/or options, and may only be available in select markets. Satellite Radio U.S. service, NavWeather® service, and SiriusXM® Travel Link® services (if any of the foregoing features are equipped on vehicle) available only to those 18 or older in the 48 contiguous states and D.C. Fees and programming subject to change. Subscriptions governed by Customer Agreement available at siriusxm.com. ©2016 Sirius XM Radio Inc. Sirius®, XM® and all related marks and logos are trademarks of Sirius XM Radio Inc. ¹¹4x4 only. Not available on Crew Cab Long Bed. ¹²Standard on 4x2 models and Crew Cab Long Bed. ¹³Features in this package are standard on SV V6 with manual transmission. ¹⁴Driving is serious business. Only use features when safe to do so. App availability is dependent upon vehicle model, trim level, packaging, and/or options. See NissanUSA.com/connect for complete app availability details. Never program while driving. GPS mapping may not be detailed in all areas or reflect current road status. Compatible smartphone required. Cellular network and GPS signals not available in all areas and/or at all times. Technology is evolving, and changes by independent companies are not within Nissan's control. Nissan is not responsible for associated costs that may be required for continued operation due to cellular network termination (including equipment upgrades, if available, or roaming charges on alternative networks) or other third party changes. Should a third party provider terminate/restrict service, service may be terminated without notice and with no liability to Nissan and its agents or affiliates. Subscription Agreement required and terms and conditions of Subscription Agreement apply. See NissanUSA.com/connect for details. Text rates and/or data usage may apply. ¹⁵Never program while driving. GPS mapping may not be detailed in all areas or reflect current road status. ¹⁶Parking aid/convenience feature. Cannot completely eliminate blind spots. May not detect every object and does not warn of moving objects. Always check surroundings and turn to look behind you before moving vehicle. ¹⁷The optional Rear Sonar System is a convenience, but is not a substitute for proper backing procedures. Always turn and check that it is safe to do so before backing up. May not detect every object behind you. Bilstein® is a registered trademark of ThyssenKrupp Bilstein GmbH. HomeLink® is a registered trademark of Gentex Corporation. Rockford Fosgate® is a registered trademark of Rockford Corporation.

CHOOSE YOUR PACKAGE



S WORK TRUCK PACKAGE¹

- Factory-applied spray-on bedliner
- Bed rail caps
- Splash guards
- All-season floor mats



SV VALUE TRUCK PACKAGE

- Available on SV V6 with Automatic Transmission Only
- RearView Monitor⁵ and Rear Sonar System⁶
- Dual Zone Automatic Temperature Control (ATC)
- Six speakers (King Cab only)
- Auto-dimming rearview mirror, digital compass, and outside temperature display
- Factory-applied spray-on bedliner
- Utili-track[®] Channel System with 4 tie-down cleats⁷
- Fog lights
- Vehicle Security System
- Heated front seats and carpeted floor mats
- Sliding bed extender
- Tow hitch receiver, Class IV⁸
- Leather-wrapped steering wheel and shift knob



S PREFERRED PACKAGE

- Available on S King Cab[®] with Manual Transmission Only
- 5.0" color display
- AM/FM/CD audio system with four speakers
- Air conditioning
- USB connection port for iPod[®] interface and other compatible devices²
- Bluetooth[®] Hands-free Phone System³
- Hands-free text messaging assistant⁴
- Streaming audio via Bluetooth[®] wireless technology³
- Illuminated steering wheel-mounted audio controls
- Cruise control
- Front map lights and overhead compartment with sunglasses storage



PRO-4X[®] LUXURY PACKAGE

- Available on PRO-4X Crew Cab with Automatic Transmission Only
- PRO-4X embroidered leather-appointed seats
- White contrast interior stitching
- 8-way power adjustable driver's seat
- 4-way power adjustable front-passenger's seat
- Heated outside mirrors
- Rear fold-down center armrest
- Power sliding glass moonroof
- Roof rack with crossbars

MOONROOF PACKAGE | SV, SL

- Available on SV Crew Cab and SL Crew Cab Only
- Power sliding glass moonroof with tilt feature

Images may show additional available equipment. ¹Late availability. ²Driving is serious business and requires your full attention. If you have to use the connected device while driving, exercise extreme caution at all times so full attention may be given to vehicle operation. iPod[®] is a registered trademark of Apple, Inc. All rights reserved. iPod[®] or other external device not included. ³Availability of specific features is dependent upon the phone's Bluetooth[®] support. Please refer to your phone Owner's Manual for details. Bluetooth[®] word mark and logos are owned by Bluetooth SIG, Inc., and any use of such marks by Nissan is under license. See NissanUSA.com/bluetooth for details. ⁴Use the text messaging feature after stopping your vehicle in a safe location. If you have to use the feature while driving, exercise extreme caution at all times so full attention may be given to vehicle operation. Compatible smartphone required. Text rates and/or data usage may apply. ⁵Parking aid/convenience feature.

Cannot completely eliminate blind spots. May not detect every object and does not warn of moving objects. Always check surroundings and turn to look behind you before moving vehicle. ⁶The optional Rear Sonar System is a convenience, but is not a substitute for proper backing procedures. Always turn and check that it is safe to do so before backing up. May not detect every object behind you. ⁷Cargo shown for display purposes only. Cargo and load capacity limited by weight and distribution. Always secure all cargo. Heavy loading of the vehicle with cargo, especially on the roof, will affect the handling and stability of the vehicle. ⁸Towing capability varies by configuration. See Nissan Towing Guide and Owner's Manual for additional information.

CHOOSE YOUR ACCESSORIES



STEP UP YOUR GAME

Every Genuine Nissan Accessory is custom-fit, custom-designed and durability-tested. Each one is also backed by Nissan's 3-year/36,000-mile (whichever occurs first) limited warranty (if installed by dealer at the time of purchase)¹. Plus, they can be financed when installed by dealer at time of purchase.

- A. **Desert Runner[®] Carpeted Floor Mats**
Shield your carpet and show your pride.
- B. **Bed Rail Caps²**
Protect your bed rails from a battering.
- C. **Tie-down Cleat³**
Make the most of your Utili-track[®] Channel System.
- D. **PRO-4X[®] Carpeted Floor Mats**
It's the ultimate Frontier. Treat it right.
- E. **Hitch Ball Mount and Hitch Ball, Class III⁴**
Ready for towing up to 5,000 lbs. (sold separately).
- F. **All-season Floor Mats**
Don't let the muck mess up your truck.
- G. **Body Side Moldings and Step Rails**
Protect your doors and get a lift (sold separately).
- H. **Splash Guards**
Show that puddle who's boss.

GENUINE NISSAN ACCESSORIES

TURN BRAND-NEW INTO ALL YOU

For more information and to shop online for Frontier[®] Genuine Nissan Accessories, go to bit.ly/17frontier-estore

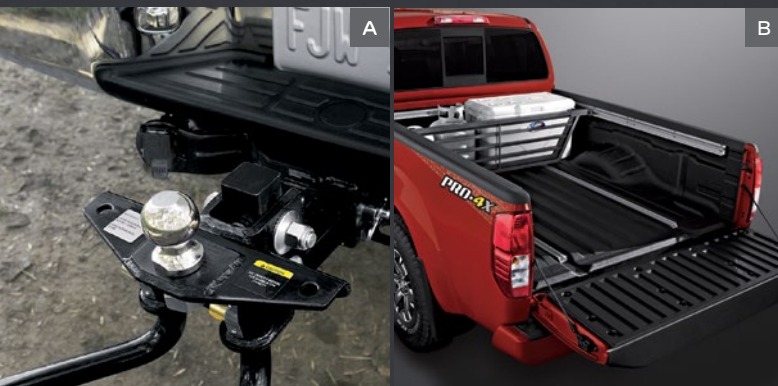


To see Genuine Nissan Accessories in action, go to bit.ly/frontier_gnvideos

¹Genuine Nissan Accessories are covered by Nissan's Limited Warranty on Genuine Nissan Replacement Parts, Genuine NISMO[®] S-Tune Parts, and Genuine Nissan Accessories for the longer of 12 months/12,000 miles (whichever occurs first) or the remaining period under the 3-year/36,000-mile (whichever occurs first) Nissan New Vehicle Limited Warranty. Terms and conditions apply. See Warranty Information Booklet for details. ²Image may not reflect actual product. ³Cargo and load capacity limited by weight and distribution. Always secure all cargo. Heavy loading of the vehicle with cargo, especially on the roof, will affect the handling and stability of the vehicle. ⁴Towing capability varies by configuration. See Nissan Towing Guide and Owner's Manual for additional information.

Nissan Frontier[®] PRO-4X[®] Crew Cab with PRO-4X[®] Luxury Package shown in Brilliant Silver with PRO-4X[®] Graphics Package, Fog Lights (standard on PRO-4X[®]), Tow Hook (standard on PRO-4X[®]), Splash Guards (standard on PRO-4X[®]), Hood Protector, and Side-window Deflectors.

CHOOSE YOUR ACCESSORIES



Along with the other hard-working accessories listed below, you'll find a full line of available accessories designed specifically to work with the available unique system of channels and cleats in Frontier's incredibly versatile Utili-track® system.¹

For more information and to shop online for Frontier® Genuine Nissan Accessories, go to bit.ly/17frontier-estore

A. Weight-distributing Hitch Ball Mount, Class IV²
Tow big or go home.

B. Sliding Bed Divider¹
Divide and conquer. Works perfectly with Utili-track® system.



C. Sliding Tool Box³
Slide it forward when you're on the move. Slide it back for easy access on the job.



D. Non-sliding Tool Box
Like a treasure box for your tools.



E. Bedliner
Because your bed takes a beating.



F. Tow Hook²
Extra strength for sticky situations.



G. Bed Tent
It's your truck! It's your campsite! It's both!



H. Sliding Bed Extender¹
Ideal for the long haul.



To see Genuine Nissan Accessories in action, go to bit.ly/frontier_gnvideos

¹Cargo shown for display purposes only. Cargo and load capacity limited by weight and distribution. Always secure all cargo. Heavy loading of the vehicle with cargo, especially on the roof, will affect the handling and stability of the vehicle. ²Towing capability varies by configuration. See Nissan Towing Guide and Owner's Manual for additional information. ³Tool Box Tray shown in photo is sold separately. See your Nissan dealer for more information.

Nissan Frontier® PRO-4X® Crew Cab with PRO-4X® Luxury Package shown in Brilliant Silver with PRO-4X® Graphics Package, Sliding Bed Extender, Sliding Tool Box, Splash Guards (standard on PRO-4X®), and Side-window Deflectors.

SPECIFICATIONS

Engine	S KC/JCC 4x2/4x4	SV KC 4x2	SV V6 KC/JCC 4x2/4x4	DR KC/JCC 4x2	PRO-4X KC/JCC 4x4	SL CC 4x2/4x4
QR25DE – 2.5-liter DOHC 16-valve 4-cylinder	■ ¹	■				
—Horsepower – 152 hp @ 5,200 rpm						
—Torque – 171 lb-ft @ 4,400 rpm						
VQ40DE – 4.0-liter DOHC 24-valve V6	■ ²			■	■	■
—Horsepower – 261 hp @ 5,600 rpm						
—Torque – 281 lb-ft @ 4,000 rpm						
Emissions – Tier 2, Bin 5 (Fed); LEV II – LEV (CA)	■	■	■	■	■	■
Continuously Variable Valve Timing Control System (CVTCS) on intake valves	■	■	■	■	■	■
Nissan Induction Control System (NICS)	■	■	■	■	■	■
Nissan Direct Ignition System	■	■	■	■	■	■
Flexible Fuel Vehicle ^{3, 4}	□ ²		□	□	□	□

Drivetrain	S KC/JCC 4x2/4x4	SV KC 4x2	SV V6 KC/JCC 4x2/4x4	DR KC/JCC 4x2	PRO-4X KC/JCC 4x4	SL CC 4x2/4x4
5-speed manual transmission	■ ¹	■				
6-speed manual transmission	■ ^{2, 5}		■ ^{2, 6, 7}		■ ²	
5-speed automatic transmission	□ ⁵ ■ ^{2, 6}	□	□ ⁸ ■ ^{2, 6, 7}	■	■ ¹ □ ²	■
Dana® 44 rear axle	■ ^{2, 5, 9}		■ ^{2, 6, 9}		■	
Switch-operated 2-speed transfer case ⁶	■ ²		■		■	■
Electronic locking rear differential					■	
Clutch start/cancel ⁹					■	
Hill start assist and hill descent control ^{4, 6}	■ ²		■		■	■

Brakes	S KC/JCC 4x2/4x4	SV KC 4x2	SV V6 KC/JCC 4x2/4x4	DR KC/JCC 4x2	PRO-4X KC/JCC 4x4	SL CC 4x2/4x4
4-wheel vented disc brakes	■	■	■	■	■	■
4-wheel Anti-lock Braking System (ABS)	■	■	■	■	■	■
Electronic Brake force Distribution (EBD)	■	■	■	■	■	■

Suspension/Chassis Bracing/Steering	S KC/JCC 4x2/4x4	SV KC 4x2	SV V6 KC/JCC 4x2/4x4	DR KC/JCC 4x2	PRO-4X KC/JCC 4x4	SL CC 4x2/4x4
Independent double-wishbone front suspension	■	■	■	■	■	■
Overslung multi-leaf rear suspension with solid axle	■	■	■	■	■	■
Bilstein® off-road performance shock absorbers	■	■	■	■	■	■
Front stabilizer bar	■	■	■	■	■	■
Engine-speed-sensitive power steering	■	■	■	■	■	■

Wheels/Tires	S KC/JCC 4x2/4x4	SV KC 4x2	SV V6 KC/JCC 4x2/4x4	DR KC/JCC 4x2	PRO-4X KC/JCC 4x4	SL CC 4x2/4x4
15" x 6.5" 6-spoke steel wheels	■ ¹					
16" x 7" 6-spoke steel wheels	■ ²					
16" x 7" 6-split spoke aluminum-alloy wheels		■	■			
16" x 7" 6-spoke aluminum-alloy wheels				■	■	
18" x 7.5" 6-split spoke aluminum-alloy wheels						■
P235/75R15 mud- and snow-rated all-season tires	■ ¹					
P265/70R16 mud- and snow-rated all-season tires	■ ²	■	■			
P265/75R16 mud- and snow-rated all-terrain tires				■	■	
P265/60R18 mud- and snow-rated all-season tires						■

■ Standard

□ Optional

W Part of S Work Truck Package¹⁰

P Part of S Preferred Package

VT Part of SV Value Truck Package

L Part of PRO-4X Luxury Package

M Part of Moonroof Package

Exterior Features	S KC/JCC 4x2/4x4	SV KC 4x2	SV V6 KC/JCC 4x2/4x4	DR KC/JCC 4x2	PRO-4X KC/JCC 4x4	SL CC 4x2/4x4
Skid plates (oil pan/fuel tank/transfer case)					■	
Automatic on/off headlights					■	■
Fog lights			VT	■	■	■
Roof rack with crossbars					L	
Step rails and body-color side molding						■
Front tow hook ⁶	■ ²				■	■
Chrome grille	■	■	■			■
Satin chrome grille					■	
Upper body-color/lower black front bumper	■					
Body-color front bumper		■	■	■	■	
Chrome front bumper						
Body-color rear bumper	■			■	■	
Chrome rear bumper		■	■			■
Black door handles and outside mirrors	■	■	■	■		
Body-color door handles and outside mirrors					■	
Chrome door handles and outside mirrors						■
Dual power outside mirrors					L	■
Heated outside mirrors					L	■
Power sliding glass moonroof			M		L	M
Sliding rear window		■	■	■	■	■
Rear Sonar System			VT		■	■
Tow hitch receiver, Class IV ¹¹			VT			
Long Bed			□ ^{2, 4}			□
Utili-track® Channel System with 4 adjustable tie-down cleats			VT		■	■
Factory-applied spray-on bedliner	W		VT		■	■

Comfort/Convenience	S KC/JCC 4x2/4x4	SV KC 4x2	SV V6 KC/JCC 4x2/4x4	DR KC/JCC 4x2	PRO-4X KC/JCC 4x4	SL CC 4x2/4x4
NissanConnect SM with Navigation and Mobile Apps ¹²					■	■
5.0" color display	P ^{1, 13} ■ ²	■	■	■		
5.8" color touch-screen display					■	■
Nissan Voice Recognition for navigation and audio					■	■
SiriusXM® Travel Link® (weather, fuel prices, movie listings, stock info, and sports) ¹⁴					■	■
SiriusXM® Traffic ¹⁴					■	■
RearView Monitor			VT		■	■
Bluetooth® Hands-free Phone System ¹⁵	P ^{1, 13} ■ ²	■	■	■	■	■
Air conditioning	P ^{1, 13} ■ ²	■	■	■		
Dual Zone Automatic Temperature Control (ATC)			VT		■	■
Remote keyless entry		■	■	■	■	■
HomeLink® Universal Transceiver					■	■
Power door locks		■	■	■	■	■
Power windows with driver's window one-touch auto-down		■	■	■	■	■
Auto-dimming rearview mirror with digital compass, and outside temperature display			VT		■	■
Two 12-volt DC power outlets	■	■	■	■	■	■
Multi-functional trip computer				■	■	■
Sun visors with vanity mirrors and extension	■ ²	■	■	■	■	■

Seating/Appointments	S KC/JCC 4x2/4x4	SV KC 4x2	SV V6 KC/JCC 4x2/4x4	DR KC/JCC 4x2	PRO-4X KC/JCC 4x4	SL CC 4x2/4x4
4-way manual driver's seat	■	■	■			
8-way manual driver's seat				■	■	
8-way power adjustable driver's seat					L	■
4-way manual front-passenger's seat	■	■	■	■	■	
4-way power adjustable front-passenger's seat					L	■
Driver's seat adjustable lumbar support				■	■	■
Forward-facing rear flip-up seat	■ ¹	■	■ ¹	■ ¹	■ ¹	
60/40 Split flip-up rear bench seat	■ ²		■ ²	■ ²	■ ²	■
Cloth seat trim	■	■	■			
Frontier embroidered cloth seat trim				■		
PRO-4X embroidered cloth seat trim					■	
PRO-4X embroidered leather-appointed seats					L	
Leather-appointed seats						■
Heated front seats			VT		■	■
Leather-wrapped steering wheel			VT		■	■
White-faced gauges with satin chrome bezels				■	■	
Gauges with satin chrome bezels						■

Audio/Entertainment	S KC/JCC 4x2/4x4	SV KC 4x2	SV V6 KC/JCC 4x2/4x4	DR KC/JCC 4x2	PRO-4X KC/JCC 4x4	SL CC 4x2/4x4
AM/FM/CD audio system with four speakers	P ^{1, 13}	■	■ ¹	■ ¹		
AM/FM/CD audio system with six speakers	■ ²		VT ¹ ■ ²	■ ²	■ ¹	
Rockford Fosgate®-powered audio system with ten speakers, including subwoofer	P ^{1, 13} ■ ²	■	■	■	■	■
USB connection port for iPod® interface					■	■
SiriusXM® Satellite Radio ¹⁴		■	■	■	■	■
Streaming audio via Bluetooth® wireless technology ¹⁴	P ^{1, 13} ■ ²	■	■	■	■	■

Safety/Security	S KC/JCC 4x2/4x4	SV KC 4x2	SV V6 KC/JCC 4x2/4x4	DR KC/JCC 4x2	PRO-4X KC/JCC 4x4	SL CC 4x2/4x4
Nissan Advanced Air Bag System with dual-stage supplemental front air bags with seat belt and occupant classification sensors	■	■	■	■	■	■
Driver and front passenger seat-mounted side-impact supplemental air bags	■	■	■	■	■	■
Roof-mounted curtain supplemental air bags with rollover sensor for side-impact and rollover head protection for front and rear-seat outboard occupants	■	■	■	■	■	■
Vehicle Dynamic Control (VDC) ¹⁶ with Traction Control System (TCS)	■	■	■	■	■	■
Active Brake Limited Slip (ABLS)	■	■	■	■	■	■
LATCH System (Lower Anchors and Tethers for Children)	■	■	■	■	■	■
Vehicle Security System			VT		■	■

¹King Cab only. ²Crew Cab only. ³Flexible Fuel Vehicles (FFV) are not available in all states — please check with your local Nissan dealer. ⁴Automatic transmission only. ⁵4x2 only. ⁶4x4 only ⁷Standard bed only. ⁸King Cab, Crew Cab Long Bed, and Crew Cab 4x2 models only. ⁹Manual transmission only. ¹⁰Late availability. ¹¹7-pin connector trailer wire harness and tow hitch receiver required, both sold separately. See Nissan Towing Guide and Owner's Manual for additional information. ¹²Driving is serious business. Only use features when safe to do so. App availability is dependent upon vehicle model, trim level, packaging, and/or options. See NissanUSA.com/connect for complete app availability details. Never program while driving. GPS mapping may not be detailed in all areas or reflect current road status. Compatible smartphone required. Cellular network and GPS signals not available in all areas and/or at all times. Technology is evolving, and changes by independent companies are not within Nissan's control. Nissan is not responsible for associated costs that may be required for continued operation due to cellular network termination (including equipment upgrades, if available, or roaming charges on alternative networks) or other third party changes. Should a third party provider terminate/restrict service, service may be terminated without notice and with no liability to Nissan and its agents or affiliates. Subscription Agreement required and terms and conditions of Subscription Agreement apply. See NissanUSA.com/connect for details. Text rates and/or data usage may apply. ¹³Standard on Frontier® S King Cab® with automatic transmission. ¹⁴Required monthly subscriptions

TOWING/CAPACITIES/PAYLOAD/MPG

Maximum Towing – Lbs. (4x2/4x4) ¹⁷	S	SV	DR	PRO-4X	SL
4-cylinder King Cab 3,760/-	3,760/-	–	–	–	–
V6 King Cab	–	6,710/6,500	6,710/-	-/6,450	–
V6 Crew Cab	6,630/6,400	6,640/6,370	6,640/-	-/6,290	6,510/6,270
V6 Crew Cab Long Bed	–	6,500/6,230	–	–	-/6,110

Capacities	King Cab	Crew Cab/Long Bed
Seating capacity	4	5
Interior passenger volume (cu. ft.)	87.7	101.1
Fuel tank (gals.)	21.1	21.1

Maximum Payload – Lbs. (Manual/Automatic Transmission)	S	SV	DR	PRO-4X	SL
4-cylinder					
King Cab 4x2	930/880	890/880	–	–	–
V6 King Cab 4x2	–	-/1,430	-/1,429	–	–
V6 King Cab 4x4	–	-/1,360	–	-/1,180	–
V6 Crew Cab 4x2	1,460/1,480	-/1,500	-/1,354	–	-/1,370
V6 Crew Cab 4x4	-/1,340	1,120/1,360	–	1,040/1,030	-/1,210
V6 Crew Cab Long Bed 4x2	–	-/1,360	–	–	–
Long Bed 4x4	–	-/1,230	–	–	-/1,060

2017 EPA Fuel Economy Estimates	4-cylinder	V6
City/Hwy/Combined MPG		
Manual transmission – 4x2 (4x4)	19/23/21 (N/A)	17/22/19 (16/21/18)
Automatic transmission – 4x2 (4x4)	17/23/19 (N/A)	16/22/18 (15/21/17)

Fuel economy based on Targeted 2017 EPA fuel economy estimates for 2017 Frontier. EPA data not available at time of publication. Targeted 2017 fuel economy of 19 city MPG or 23 highway MPG or 21 combined MPG estimate based on Nissan internal testing results, subject to EPA confirmation. Actual mileage may vary with driving conditions — use for comparison only.

sold separately for each available SiriusXM feature after trial period, and are continuous until you call SiriusXM to cancel. Installation costs, one-time activation fee, other fees and taxes will apply. Each SiriusXM feature availability is dependent upon vehicle model, trim level, packaging, and/or options, and may only be available in select markets. Satellite Radio U.S. service, NavWeather® service, and SiriusXM Travel Link® services (if any of the foregoing features are equipped on vehicle) available only to those 18 or older in the 48 contiguous states and D.C. Fees and programming subject to change. Subscriptions governed by Customer Agreement available at siriusxm.com. ©2016 Sirius XM Radio Inc. Sirius,® XM® and all related marks and logos are trademarks of Sirius XM Radio Inc. ¹⁵Availability of specific features is dependent upon the phone's Bluetooth® support. Please refer to your phone Owner's Manual for details. Bluetooth® word mark and logos are owned by Bluetooth SIG, Inc., and any use of such marks by Nissan is under license. See NissanUSA.com/bluetooth for details. ¹⁶VDC, which should remain on when driving except when freeing the vehicle from mud or snow, cannot prevent accidents due to abrupt steering, carelessness, or dangerous driving techniques. ¹⁷Subject to vehicle tow/payload capacity. See Nissan Towing Guide and Owner's Manual for additional information. 7-pin connector trailer wire harness and tow hitch receiver required, both sold separately. Bilstein® is a registered trademark of ThyssenKrupp Bilstein GmbH. Dana® is a registered trademark of Dana Corporation. HomeLink® is a registered trademark of Gentex Corporation. iPod® is a registered trademark of Apple, Inc. All rights reserved. iPod® or other external device not included. Rockford Fosgate® is a registered trademark of Rockford Corporation. This brochure is intended for general descriptive and informational purposes only. It is subject to change and does not constitute an offer, representation or warranty (express or implied) by Nissan North America, Inc. Interested parties should confirm the accuracy of any information in this brochure as it relates to a vehicle directly with Nissan North America, Inc., before relying on it to make a purchase decision. Nissan North America, Inc., reserves the right to make changes, at any time, without prior notice, in prices, colors, materials, equipment, specifications, and models and to discontinue models or equipment. Due to continuous product development and other pre- and post-production factors, actual vehicle, materials and specifications may vary from this brochure. Some vehicles shown with optional equipment. See the actual vehicle for complete accuracy. Availability and delivery times for particular models or equipment may vary. Specifications, options and accessories may differ in Hawaii, U.S. territories and other countries. For additional information on availability, options or accessories, see your Nissan dealer or contact Nissan North America, Inc. At NissanUSA.com, you'll find virtual product demonstrations, a way to "build your own Nissan," a dealer locator, and more information about key Nissan support services. Or if you'd prefer, call **1-800-NISSAN-3** for answers to specific questions about Frontier® or any other Nissan vehicle. The Nissan names, logos, product names, feature names, and slogans are trademarks owned by or licensed to Nissan Motor Co. Ltd. and/or its North American subsidiaries. Other trademarks and trade names are those of their respective owners. **Always wear your seat belt, and please don't drink and drive.** ©2016 Nissan North America, Inc. ¹⁷ Frontier. 1719219-N-10/16-60M-CGI