



Innovation that excites

# 2017 VERSA® SEDAN

## SWIPE FOR MORE INFO

Download the Interactive Brochure Hub app on your tablet and you'll have Versa® Sedan and the whole Nissan lineup at your fingertips. Get the full product story enhanced with interactive demos and videos, plus complete info on trim levels, colors, accessories, and more.



Nissan Interactive Brochure Hub available free on the App Store® and Google Play.®

Or go to [NissanUSA.com](http://NissanUSA.com) to view on your desktop.



## NISSAN ROADSIDE ASSISTANCE

Your peace of mind is on us. For 36 months or 36,000 miles, whichever comes first, your new Nissan is covered for the following:<sup>1</sup>

- Flat-tire changes
- Jump starts
- Trip Interruption benefits
- Vehicle lockouts
- Emergency fuel delivery



Innovation that excites

Follow Nissan on:



visit [NissanUSA.com/versa-sedan](http://NissanUSA.com/versa-sedan)

<sup>1</sup>Roadside Assistance and Trip Interruption available during the first 36 months or 36,000 miles (whichever occurs first) after initial new vehicle delivery. Restrictions apply. See Owner's Manual for details. The App Store® logo is a registered trademark of Apple, Inc. All rights reserved. Facebook® is a registered trademark of Facebook, Inc. Google Play® is a registered trademark of Google, Inc. Twitter® is a registered trademark of Twitter, Inc. YouTube® is a registered trademark of Google, Inc.

PRINTED IN USA



**TAKE ON** the streets with aerodynamic style and efficiency that impresses inside and out. Pump some music through the spacious interior at the tap of your phone.<sup>1</sup> Take a moment. Soak it all in – it's pretty awesome. Move forward with available advanced technologies that help keep you up to date and on the right path. The 2017 Nissan Versa<sup>®</sup> Sedan. Revel in the **CHANGE.**

Nissan Versa<sup>®</sup> Sedan SL shown in Brilliant Silver.

<sup>1</sup>Driving is serious business and requires your full attention. If you have to use the connected device while driving, exercise extreme caution at all times so full attention may be given to vehicle operation. External device not included. Compatible smartphone not included.

UP TO  
**39**  
 MPG HIGHWAY<sup>1</sup>



**SPLIT FOLD-DOWN SEATS**

An available 60/40 split fold-down rear seat gives you real flexibility carrying people and cargo. The huge pass-through means tall and wide items are always welcome along for the ride.<sup>2</sup>

<sup>2</sup>Cargo and load capacity limited by weight and distribution. Always secure all cargo.

**IMPRESSIVE FUEL ECONOMY**

Wouldn't it be cool if you could get excellent fuel economy in a roomy, comfortable car that's lots of fun to drive?<sup>1</sup> With Versa<sup>®</sup> Sedan, we got there by developing everything from exterior aerodynamics that whisper through the wind to an advanced 1.6-liter 4-cylinder engine to a virtually gearless Xtronic CVT<sup>®</sup> (Continuously Variable Transmission) that maximizes efficiency and performance.

<sup>1</sup>2017 EPA Fuel Economy Estimates 31 city/39 highway MPG for Versa<sup>®</sup> Sedan 1.6-L with CVT. Actual mileage may vary with driving conditions — use for comparison only.

**PUSH BUTTON IGNITION**

No more fumbling for a key. The available Nissan Intelligent Key<sup>®</sup> opens your Versa Sedan without ever leaving your pocket or purse. And once you're in, available Push Button Ignition starts your engine with a single touch.



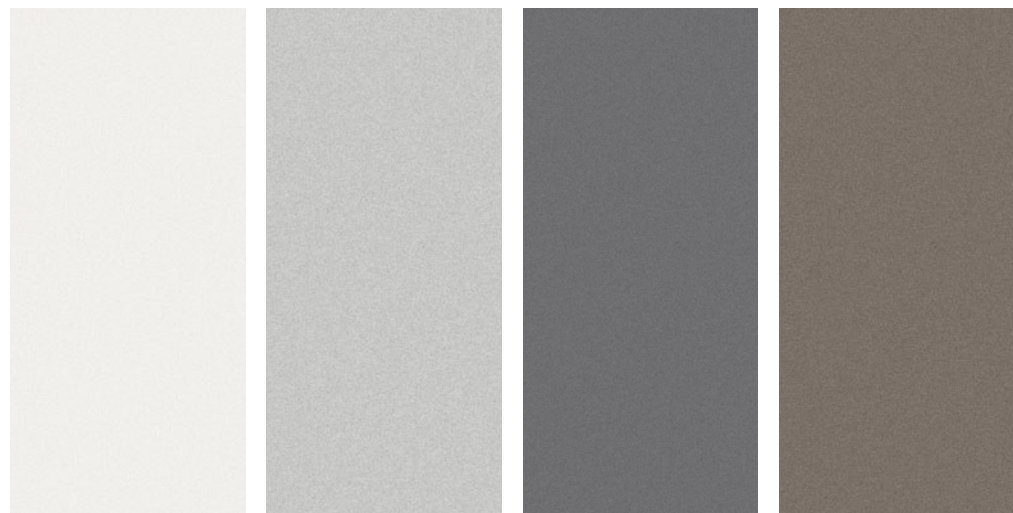
**YOUR WORLD AT YOUR FINGERTIPS**

With available NissanConnect<sup>SM</sup> with Navigation and Mobile Apps, your Versa becomes your compatible smartphone's best friend. Music, Facebook<sup>®</sup>, navigation, and more all come along for the ride, working seamlessly together through your smartphone and Versa's color touch-screen.<sup>3</sup>

<sup>3</sup>Driving is serious business. Only use features when safe to do so. App availability is dependent upon vehicle model, trim level, packaging, and/or options. See [NissanUSA.com/connect](http://NissanUSA.com/connect) for complete app availability details. Never program while driving. GPS mapping may not be detailed in all areas or reflect current road status. Compatible smartphone required. Cellular network and GPS signals not available in all areas and/or at all times. Technology is evolving, and changes by independent companies are not within Nissan's control. Nissan is not responsible for associated costs that may be required for continued operation due to cellular network termination (including equipment upgrades, if available, or roaming charges on alternative networks) or other third party changes. Should a third party provider terminate/restrict service, service may be terminated without notice and with no liability to Nissan and its agents or affiliates. Subscription Agreement required and terms and conditions of Subscription Agreement apply. See [NissanUSA.com/connect](http://NissanUSA.com/connect) for details. Text rates and/or data usage may apply. Facebook<sup>®</sup> is a registered trademark of Facebook, Inc.

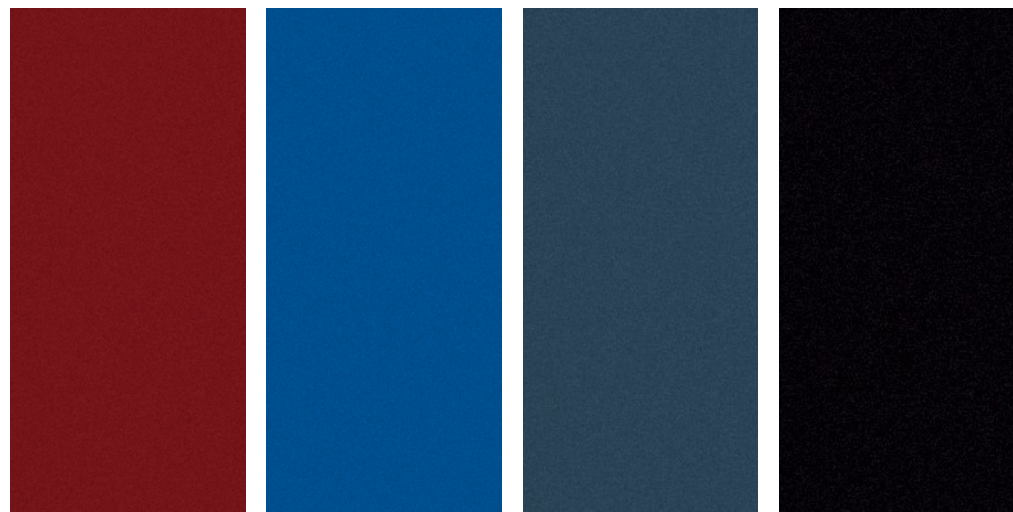
**RAISE YOUR EXPECTATIONS**

CHOOSE YOUR COLOR



Fresh Powder QM1    Brilliant Silver K23    Gun Metallic KAD    Titanium KAC

	S	S PLUS	SV	SL
CHARCOAL CLOTH	■	■	■	■
SANDSTONE CLOTH				■



Cayenne Red NAH    Metallic Blue B17    Graphite Blue RAQ    Super Black KH3

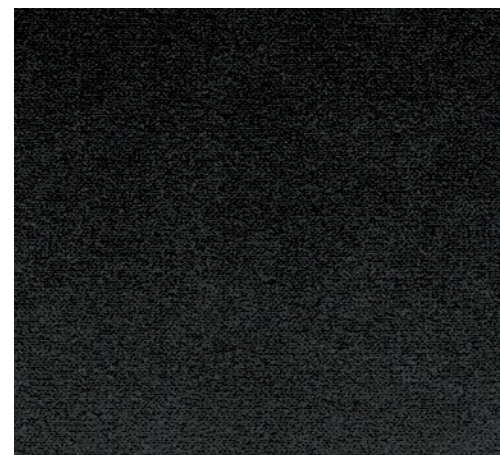
	S	S PLUS	SV	SL
CHARCOAL CLOTH		■	■	■
SANDSTONE CLOTH				■

■ Standard  
 Nissan has taken care to ensure that the color swatches presented here are the closest possible representations of actual vehicle colors. Swatches may vary slightly due to the printing process and whether viewed in daylight, fluorescent or incandescent light. Please see the actual colors at your local Nissan dealer.

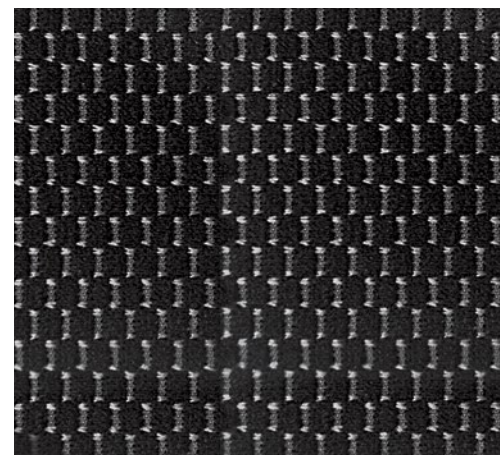
CHOOSE YOUR INTERIOR



Nissan Versa® Sedan SL shown in Charcoal Cloth.



Charcoal Cloth  
S | S Plus



Charcoal Cloth  
SV | SL



Sandstone Cloth  
SL



Nissan Versa® Sedan SL shown in Sandstone Cloth.

## CHOOSE YOUR TRIM LEVEL

**S**

- 1.6-liter DOHC 4-cylinder engine
- 5-speed manual transmission or 4-speed automatic transmission
- 15" x 5.5" steel wheels with wheel covers
- P185/65HR15 all-season low rolling resistance tires
- Chrome-accented grille
- Front tire and center fascia air deflectors
- Dual power body-color remote-controlled outside mirrors
- AM/FM/CD audio system with auxiliary audio input jack<sup>1</sup>
- Bluetooth® Hands-free Phone System<sup>2</sup>
- Four speakers
- Illuminated steering wheel-mounted audio controls
- Silver accents on steering wheel
- Trip computer
- Air conditioning
- Sun visors with extensions
- Driver's and passenger's visor vanity mirrors
- Foldable assist grips
- Six standard air bags
- Anti-lock Braking System with Electronic Brake force Distribution and Brake Assist
- Vehicle Dynamic Control (VDC) with Traction Control System (TCS)



### **S PLUS** INCLUDES S EQUIPMENT PLUS:

- Up to 39 MPG highway<sup>3</sup>
- Standard Xtronic CVT® (Continuously Variable Transmission)
- Rear tire air deflectors
- Rear spoiler with integrated LED brake light
- Cruise control



### **SV** INCLUDES S PLUS EQUIPMENT PLUS:

- Chrome outside door handles
- Integrated Key with remote keyless entry
- Remote trunk release
- Power door locks with auto-locking features
- Power windows with driver's one-touch auto-down feature
- Fine Vision electroluminescent gauges
- Outside temperature display
- USB connection port for iPod® interface and other compatible devices<sup>1</sup>
- Two auxiliary 12-volt power outlets
- 6-way manual driver's seat
- Driver's seat armrest
- Passenger seatback pocket
- Upgraded cloth seat trim
- 60/40 Split fold-down rear seats
- Cloth door trim accent
- Silver accents on dash, vent rings, shift knob and shifter surround
- Chrome inside door handles and chrome-accented center vents
- Front map light with key-linked illuminated entry

#### **KEY AVAILABLE PACKAGE:**

- Special Edition Package



### **SL** INCLUDES SV EQUIPMENT PLUS:

- 16" x 6.0" 8-spoke aluminum-alloy wheels
- P195/55HR16 all-season low rolling resistance tires
- Fog lights
- Dual power body-color outside mirrors with integrated turn signals
- Nissan Intelligent Key® with Push Button Ignition
- NissanConnect<sup>SM</sup> with Navigation and Mobile Apps, including 5.8" color touch-screen monitor<sup>4</sup>
- Nissan Voice Recognition for audio and navigation
- SiriusXM® Traffic and Travel Link<sup>5</sup>
- Hands-free text messaging assistant<sup>6</sup>
- Streaming audio via Bluetooth® wireless technology<sup>2</sup>
- SiriusXM® Satellite Radio<sup>5</sup>
- Variable intermittent windshield wipers
- RearView Monitor
- Leather-wrapped steering wheel
- Tire Pressure Monitoring System (TPMS) with Easy-Fill Tire Alert
- Nissan Vehicle Immobilizer System



Images may show additional available equipment. <sup>1</sup>Driving is serious business and requires your full attention. If you have to use the connected device while driving, exercise extreme caution at all times so full attention may be given to vehicle operation. iPod® is a registered trademark of Apple, Inc. All rights reserved. iPod® or other external device not included. <sup>2</sup>Availability of specific features is dependent upon the phone's Bluetooth® support. Please refer to your phone Owner's Manual for details. Bluetooth® word mark and logos are owned by Bluetooth SIG, Inc., and any use of such marks by Nissan is under license. See [NissanUSA.com/bluetooth](http://NissanUSA.com/bluetooth) for details. <sup>3</sup>2017 EPA Fuel Economy Estimates 31 city/39 highway MPG for Versa® Sedan 1.6-L with CVT. Actual mileage may vary with driving conditions - use for comparison only. <sup>4</sup>Driving is serious business. Only use features when safe to do so. App availability is dependent upon vehicle model, trim level, packaging, and/or options. See [NissanUSA.com/connect](http://NissanUSA.com/connect) for complete app availability details. Never program while driving. GPS mapping may not be detailed in all areas or reflect current road status. Compatible smartphone required. Cellular network and GPS signals not available in all areas and/or at all times. Technology is evolving, and changes by independent companies are not within Nissan's control. Nissan is not responsible for associated costs that may be required for continued operation due to cellular network termination (including equipment upgrades, if available, or roaming charges on alternative networks) or other third party changes. Should a third party provider terminate/restrict service, service may be terminated without notice and with no liability to Nissan and its agents or affiliates. Subscription Agreement required and terms and conditions of Subscription Agreement apply. See [NissanUSA.com/connect](http://NissanUSA.com/connect) for details. Text rates and/or data usage may apply. <sup>5</sup>Required monthly subscriptions sold separately for each available SiriusXM feature after trial period, and are continuous until you call SiriusXM to cancel. Installation costs, one-time activation fee, other fees and taxes will apply. Each SiriusXM feature availability is dependent upon vehicle model, trim level, packaging, and/or options, and may only be available in select markets. Satellite Radio U.S. service, NavWeather® service, and SiriusXM Travel Link® services (if any of the foregoing features are equipped on vehicle) available only to those 18 or older in the 48 contiguous states and D.C. Fees and programming subject to change. Subscriptions governed by Customer Agreement available at [siriusxm.com](http://siriusxm.com). ©2016 Sirius XM Radio Inc. Sirius® XM® and all related marks and logos are trademarks of Sirius XM Radio Inc. <sup>6</sup>Use the text messaging feature after stopping your vehicle in a safe location. If you have to use the feature while driving, exercise extreme caution at all times so full attention may be given to vehicle operation. Compatible smartphone required. Text rates and/or data usage may apply.

## CHOOSE YOUR ACCESSORIES



Every Genuine Nissan Accessory is custom-fit, custom-designed and durability-tested. Each one is also backed by Nissan's 3-year/36,000-mile (whichever occurs first) limited warranty (if installed by dealer at the time of purchase).<sup>1</sup> Plus, they can be financed when installed by dealer at time of purchase.

**A. Interior Accent Lighting**

Bring the party to your drive.



**B. Chrome Door Handle Accents**

Super-slick and oh, so shiny!



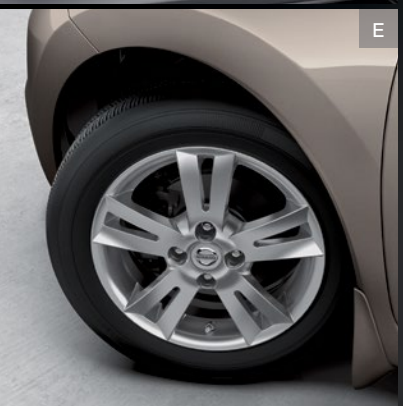
**C. Rear Decklid Spoiler and Chrome Trunk Accent**

Spoil yourself in style (sold separately).



**D. All-Season Floor Mats**

Bring on the weather.



**E. 15" Aluminum-alloy Wheels**

Knock the style up a notch.



**F. Illuminated Kick Plates**

Fewer scuffs and a grand entry, every time.



**G. Carpeted Trunk Mat<sup>2</sup>**

Because being a trunk isn't easy.



**H. Auto-dimming Rearview Mirror with HomeLink<sup>®</sup> and Compass**

Perfect for dim bulbs driving with their brights on.

**Additional Accessories:**

- Side-window deflectors
- Nissan VTRS (Vehicle Tracking and Recovery System)<sup>3</sup>
- Portable Cargo Organizer<sup>2</sup>
- Carpeted Floor Mats
- Interior Trim Appliqués
- And More

## NISSAN ACCESSORIES

# TURN BRAND-NEW INTO ALL YOU

For more information and to shop online for Versa<sup>®</sup> Sedan Genuine Nissan Accessories, go to [bit.ly/17versasedan\\_estore](http://bit.ly/17versasedan_estore)



**Nissan Versa<sup>®</sup> Sedan SL** shown in Titanium with 16" Sporty Aluminum-alloy Wheels, Side Window Deflectors, Rear Decklid Spoiler (standard on SL trim), Fog Lights (standard on SL trim) and Splash Guards.

<sup>1</sup>Genuine Nissan Accessories are covered by Nissan's Limited Warranty on Genuine Nissan Replacement Parts, Genuine NISMO<sup>®</sup> S-Tune Parts, and Genuine Nissan Accessories for the longer of 12 months/12,000 miles (whichever occurs first) or the remaining period under the 3-year/36,000-mile (whichever occurs first) Nissan New Vehicle Limited Warranty. Terms and conditions apply. See Warranty Information Booklet for details. <sup>2</sup>Cargo and load capacity limited by weight and distribution. Always secure all cargo. <sup>3</sup>VTRS requires owner registration, a constant 12-volt source, and cellular and GPS satellite availability to function properly. HomeLink<sup>®</sup> is a registered trademark of Gentex Corporation.

